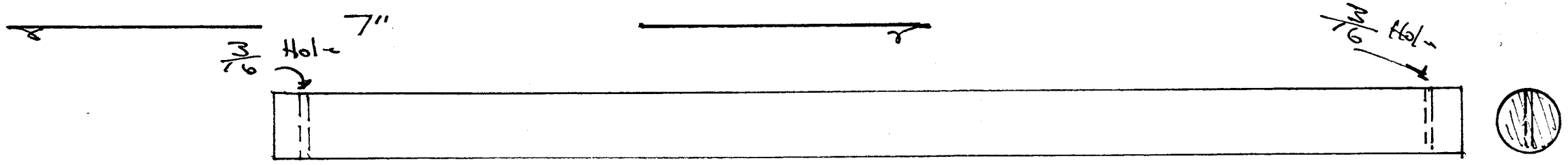
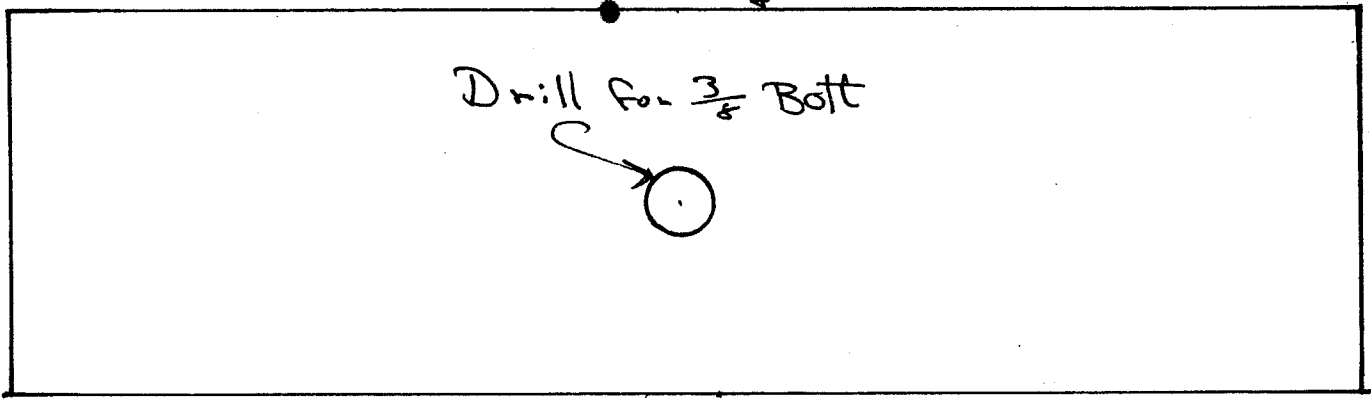
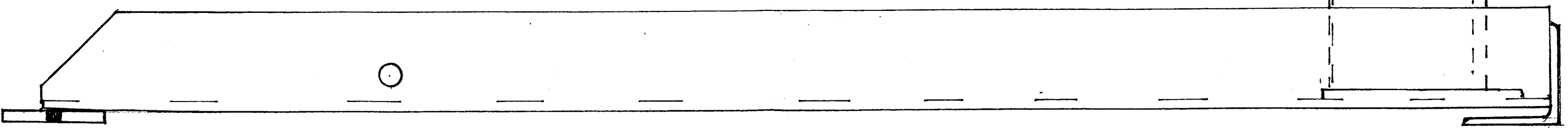


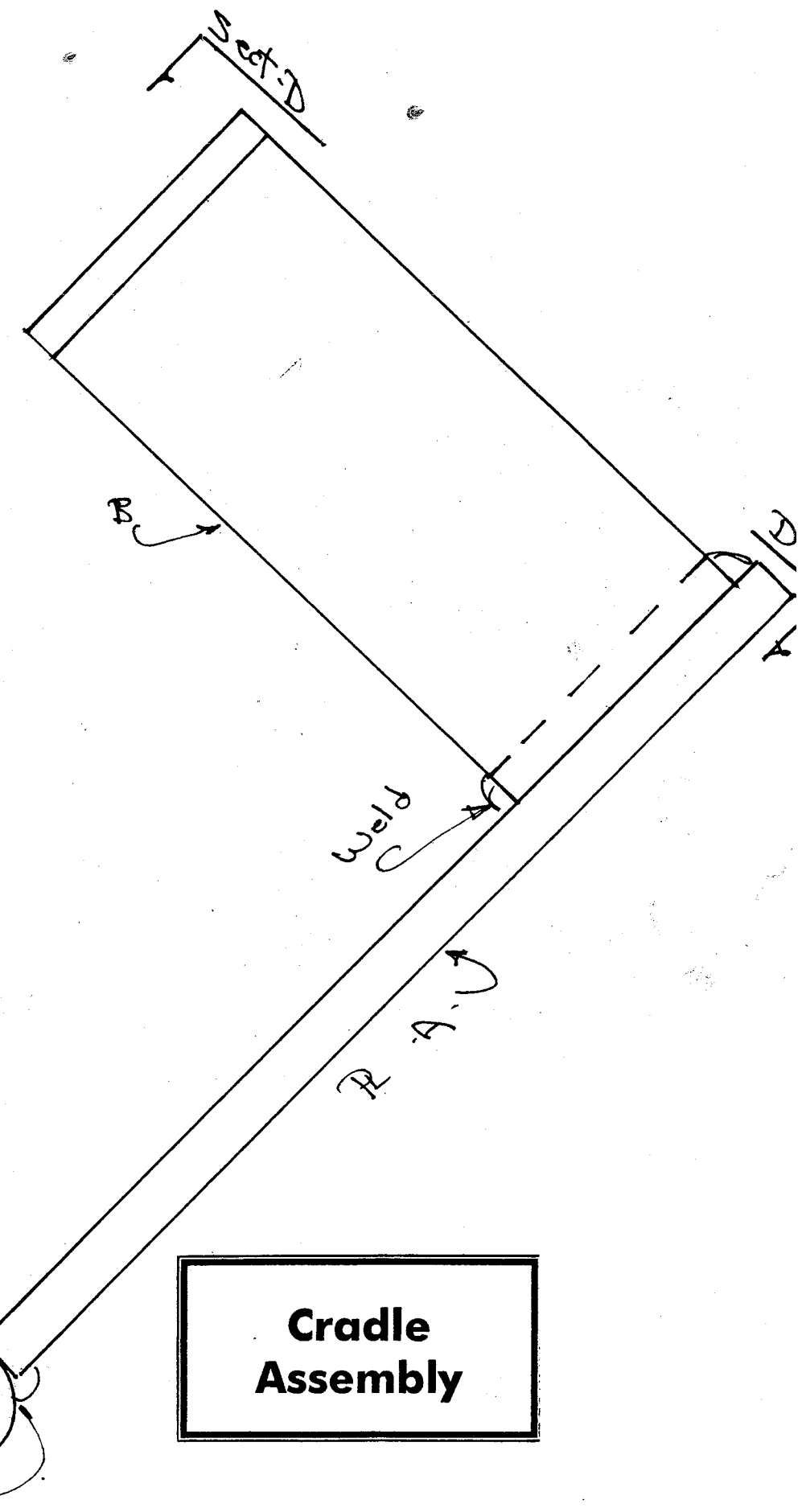
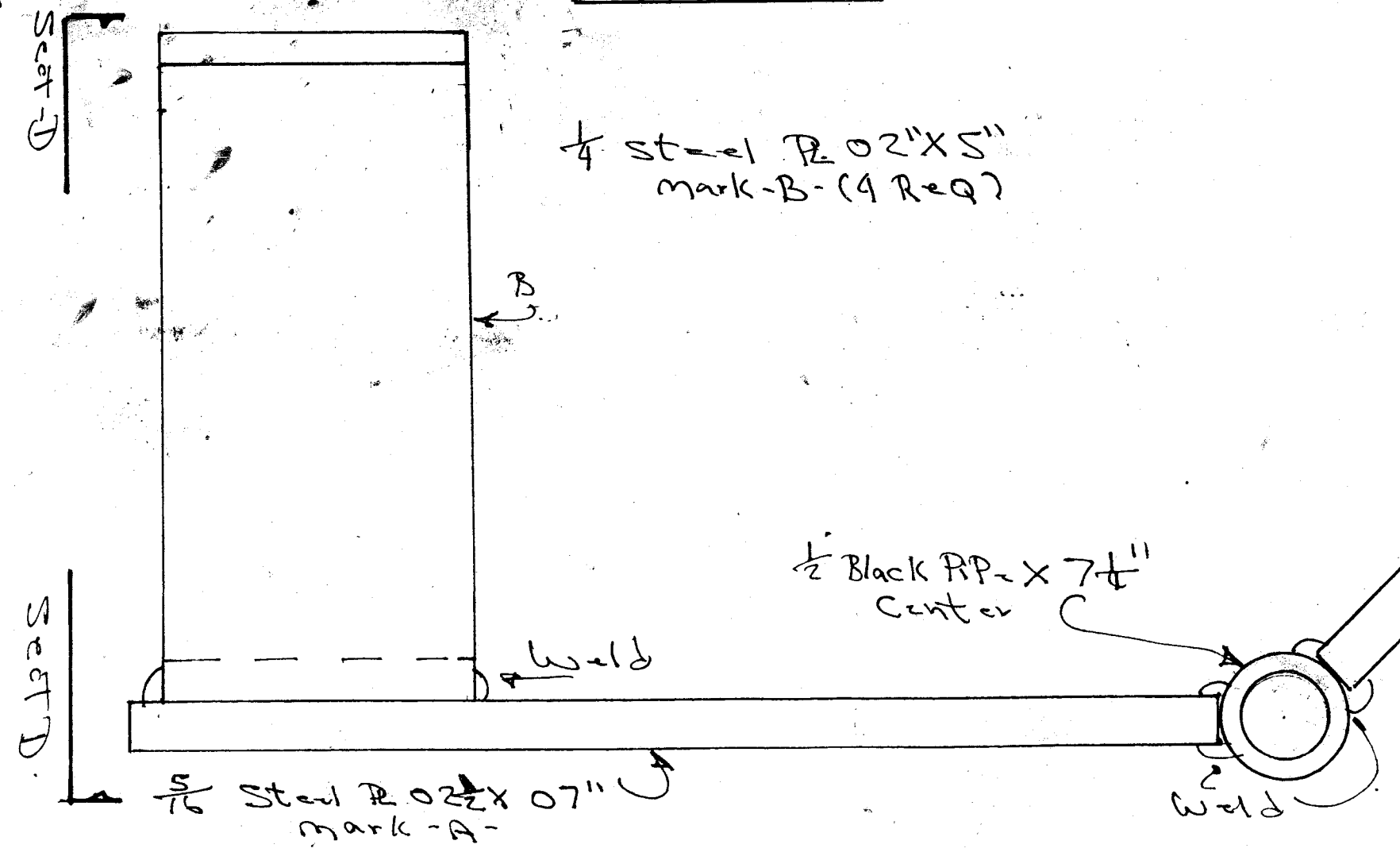
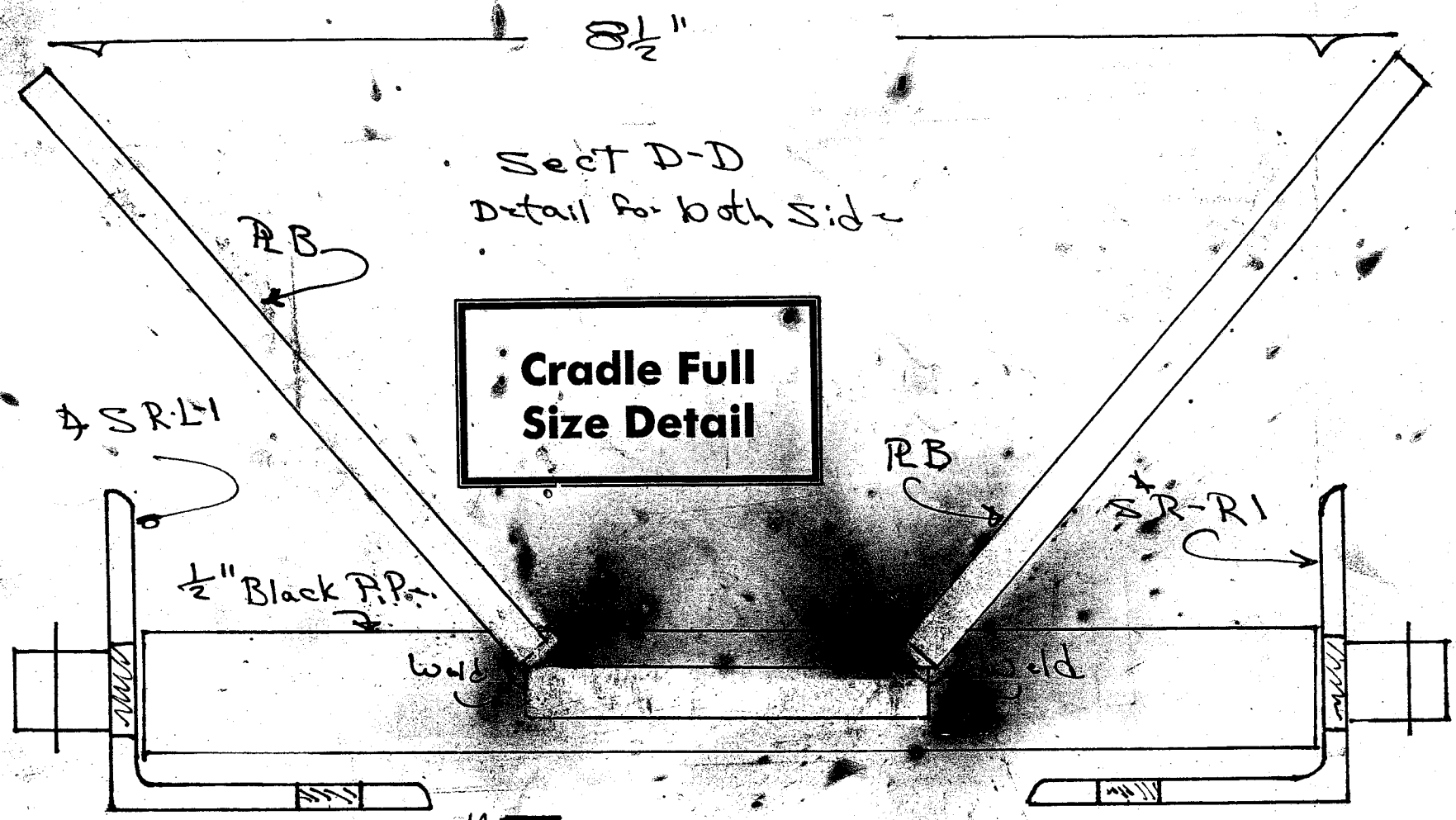
Steel R  $\frac{5}{16}$ " x 02" x 07" Mark P-1



$\frac{1}{2}$ " Rod x 09" with two  $\frac{3}{16}$  Hole  
Full Size Detail

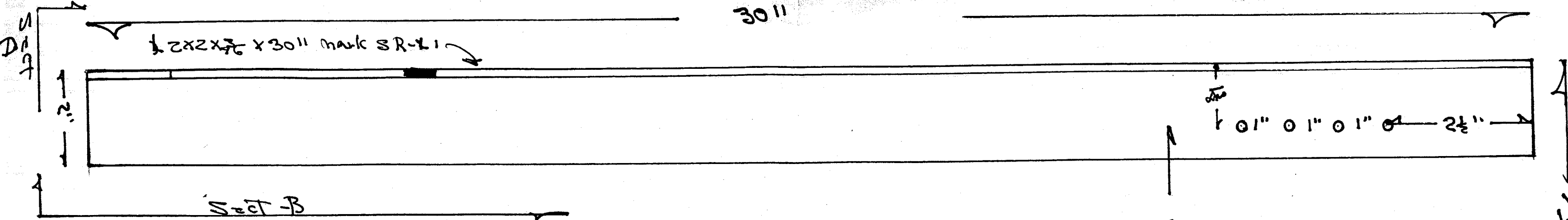


Side Rail Detail



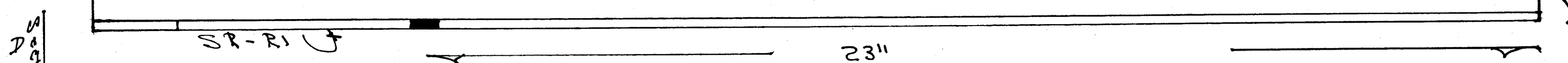
30"

2x2x $\frac{7}{8}$  x 30" mark SR-L1



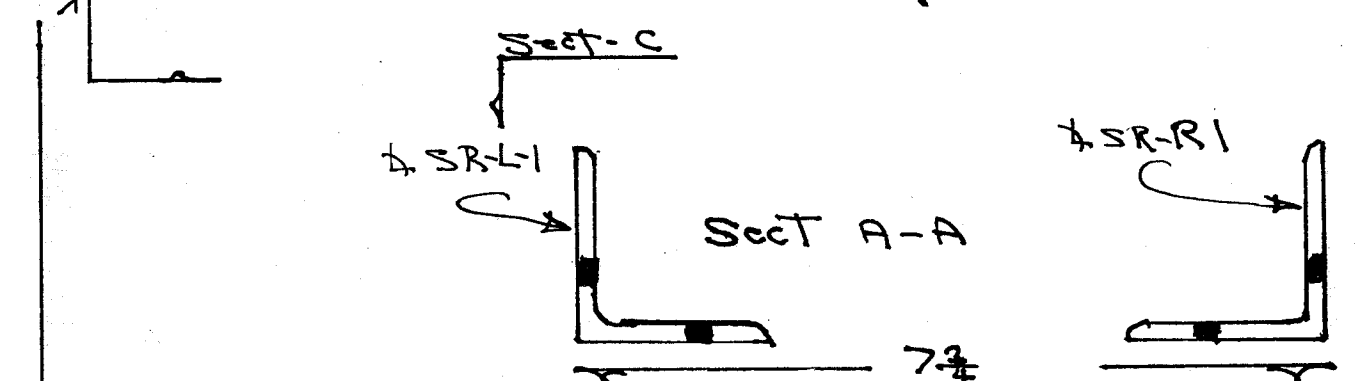
Sect-B

1" 0" 1" 0" 1" 0" 2 1/2"



SR-R1

23"

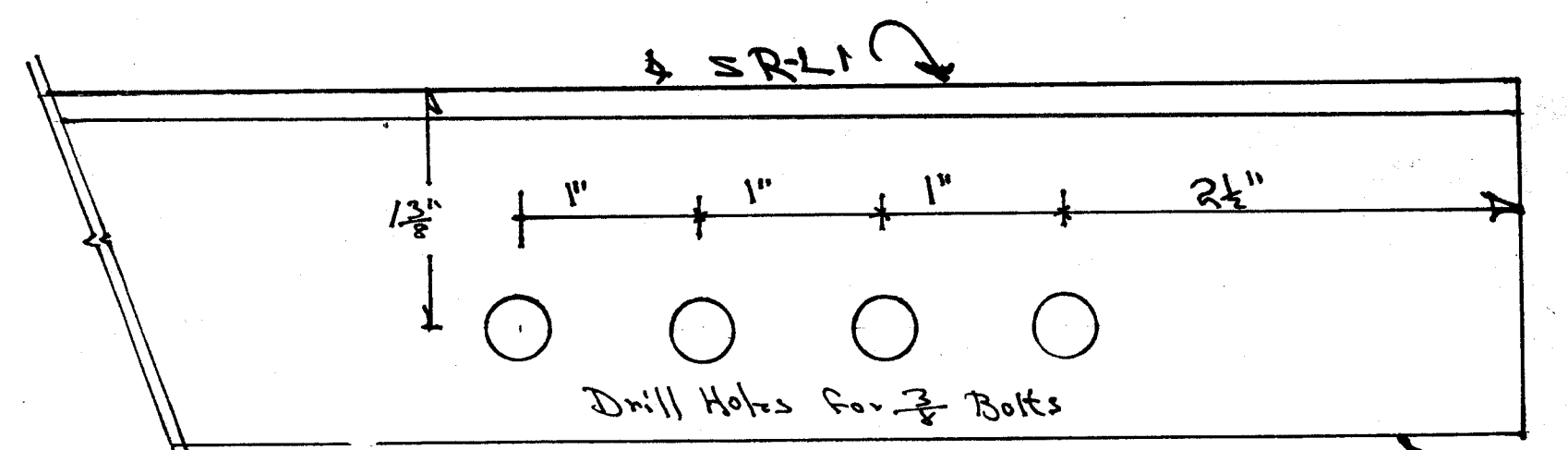


Sect A-A

SR-L1

SR-R1

7/8"

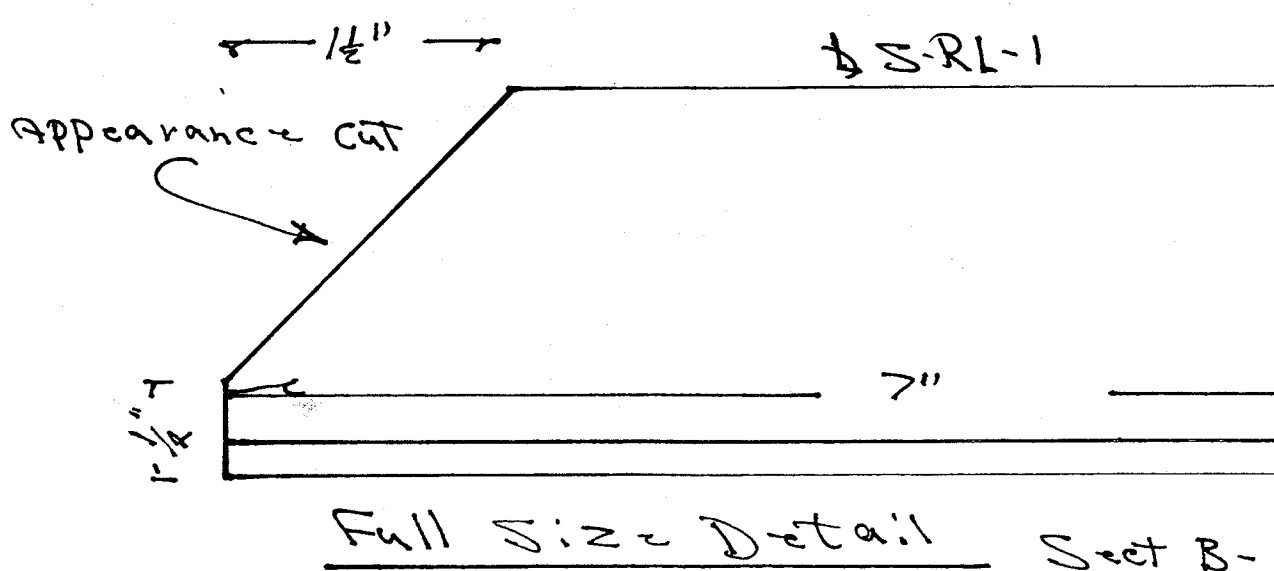


SR-L1

1/2"

1" 1" 1" 2 1/2"

Drill Holes for 3/8 Bolts



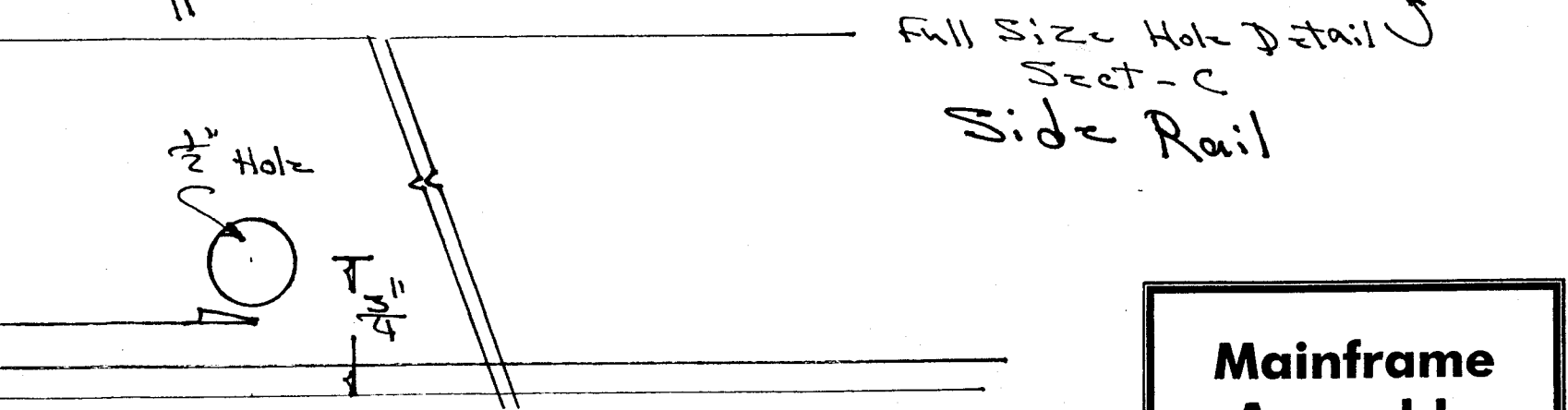
1/2"

SR-L1

Appearance cut

7"

Full Size Detail Sect B-



Full Size Hole Detail

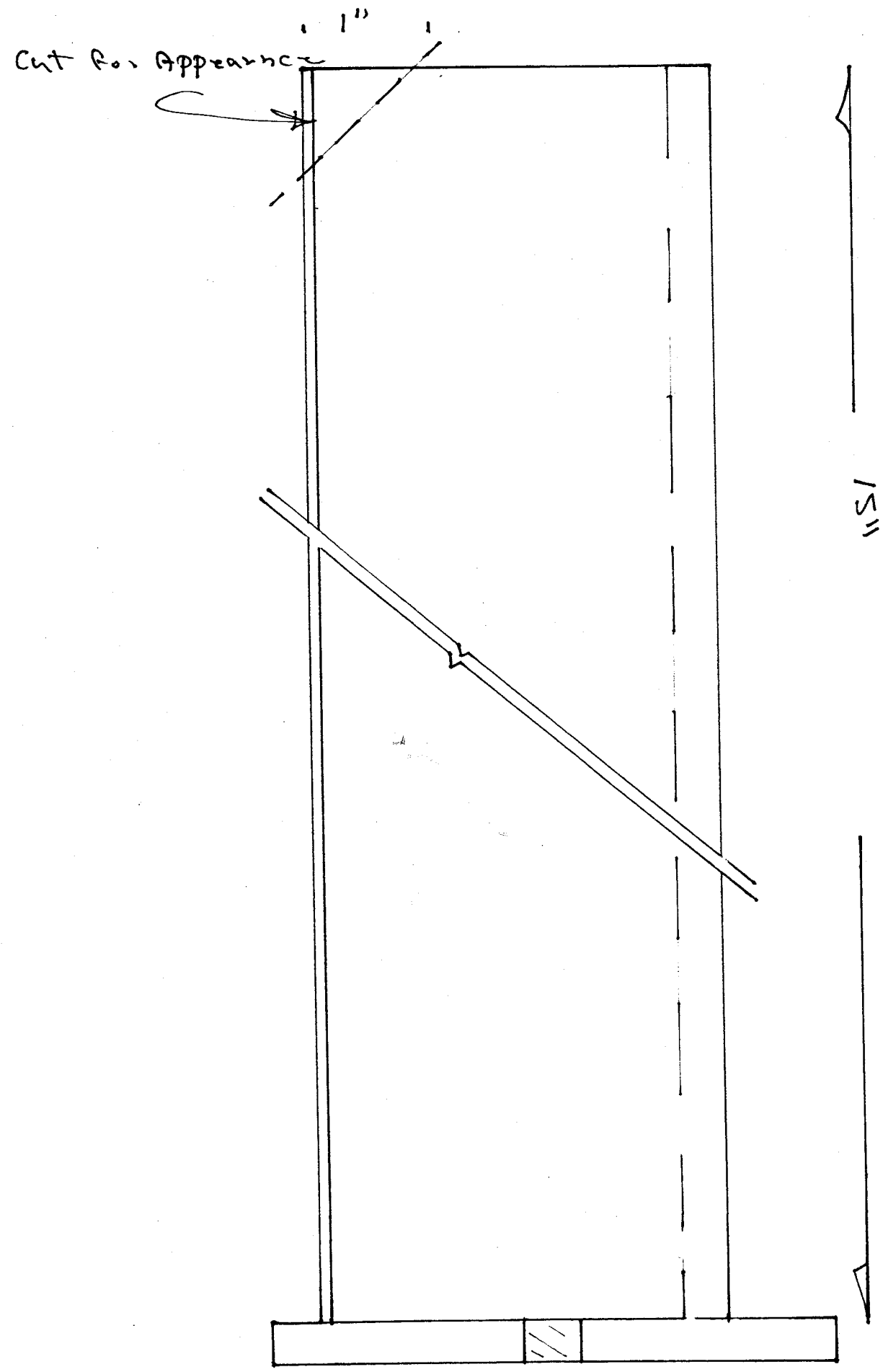
Sect-C

Side Rail

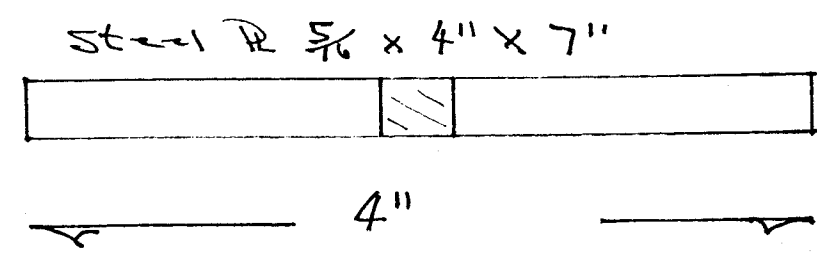
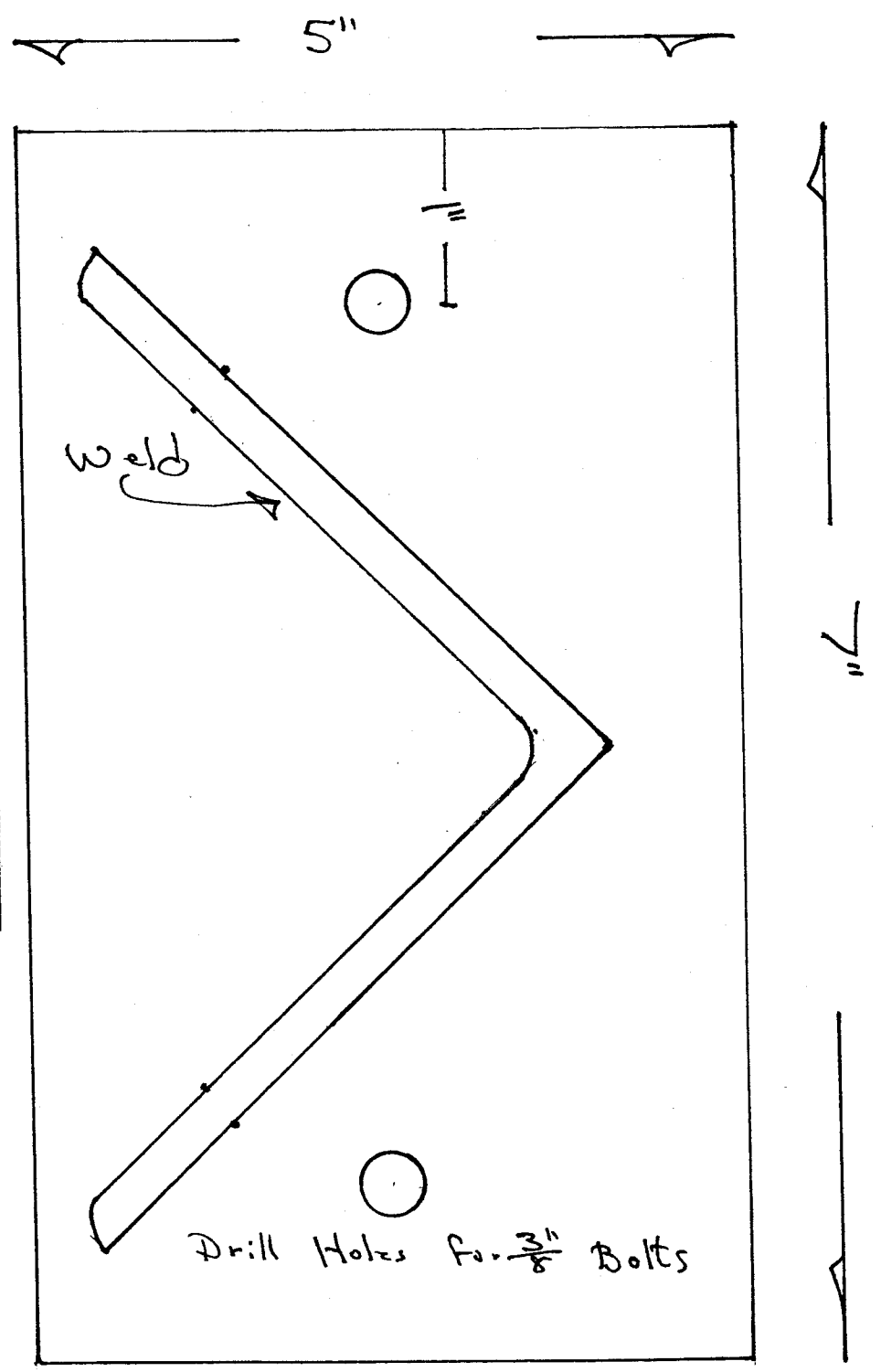
1/2" Hole

1/4"

**Mainframe  
Assembly**



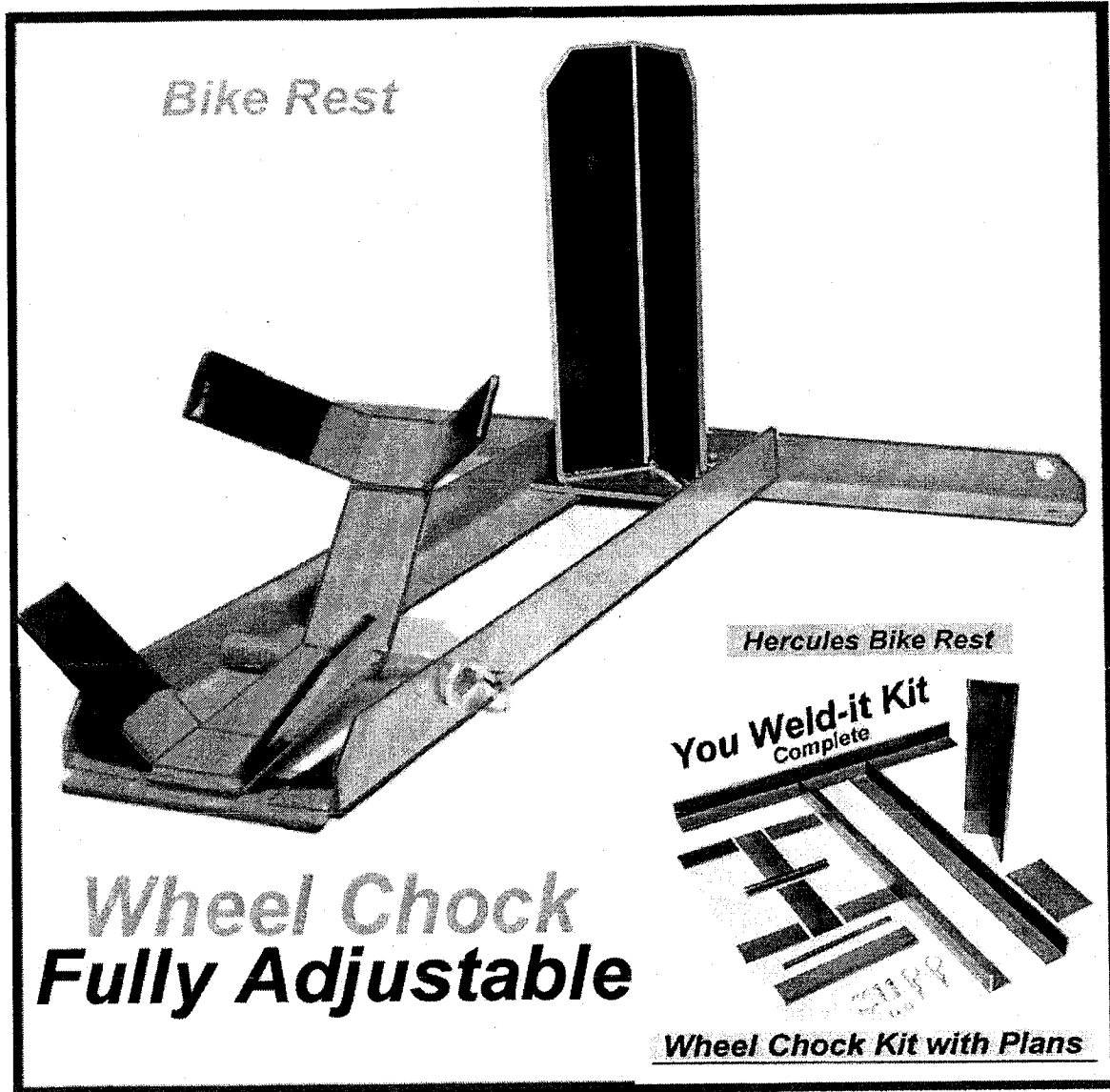
**Up-Right Full Size Detail**



**Up-Right Assembly**

# Hercules Bike Rest Wheel Chock

Our Wheel Chock holds your bike upright and secure!



If you can cut, drill, and weld steel, you can build this wheel chock!

# You Can Do It!

Plans Copyrighted by Direct Sales © 2005

## Material Parts Cutting List

### For the *Hercules Bike Rest*

3 Angle Irons	2" x 2" x 3/16" x 30"	Marked 1 Back and 2 Side Rails, R/L**
1 Angle Iron	4" x 4" x 1/4" x 15"	Marked Up-right
1 Steel Plate	4" x 7" x 5/16"	Marked Base for Up-right
1 Steel Plate	2" x 7" x 5/16"	Marked Tie-Down Plate

#### **Wheel Chock Cradle**

2 Steel Plates	2½" x 7" x 5/16"	Marked Cradle
4 Steel Plates	2" x 5" x 1/4"	Marked Cradle
1 Black Pipe	1/2" x 7 ¼"	Marked Cradle Hinge
1 Round Rod	½" x 9"	Marked Cradle Hinge Pin

\*\* = Left is opposite of right

#### **Nuts & Bolts**

2 Bolts, Grade #5	3/8" x 1 ½"	Marked Adjusting Bolts
2 Flat Washers	3/8"	Marked Adjusting Washers
2 Locking Washers	3/8"	Marked Adjusting Washers
2 Wing Nuts	3/8"	Marked Adjusting Wing Nuts
1 Can Spray Paint	Your Favorite Color	

**DISCLAIMER:** Direct Sales, author of these plans / drawings, specifically disclaims any liability or risk of personal injury, property damage, or other damages, incurred directly or indirectly as a consequence of the use of these plans / drawings. No warranty of any kind, including warranty of fitness for a particular use, is given or implied with these plans / drawings. Use of these plans / drawing constitutes an agreement that Direct Sales has no liability for their used application.

# Hercules *Bike Rest* Plans

**Now let's get started! Here are your detailed instructions:**

1. Read through ALL drawings until you know them, **then read them again.**
2. Go to the Material Parts Cutting List. Cut and drill all material that is shown
3. Mainframe Assembly. Clamp all parts together, as shown, making sure that all corners are squared and the frame is flat. Then tack weld all parts together, making sure the side rail is in the middle of the back rail.
4. Next, tack weld up-right to base plate. Weld as shown.
5. Tack weld cradle as shown in drawing. Weld as shown.
6. Clean and sand all welds and parts, as needed, for painting.
7. Prime and paint frame in your favorite color. Hot pink is not recommended for macho motorcyclists unless you're really brave!
8. Final assembly: Bolt up-right to main frame assembly, inserting bolts from the bottom up. Choose proper holes in the base plate to adjust the wheel chock to your bike.
9. Install cradle by placing the hinge pin through the main frame assembly, as shown.

**Now, you should have a great wheel chock.** IF, however, you run into any problems, have any questions, or just feel like talking about your experience, **CALL US!** Willis has years of experience building these. Reports from all customers are that they provide sturdy support. Call us at 301-447-6962 (or 301-676-1406) and we'll be happy to walk you through anything you're having difficulties with.